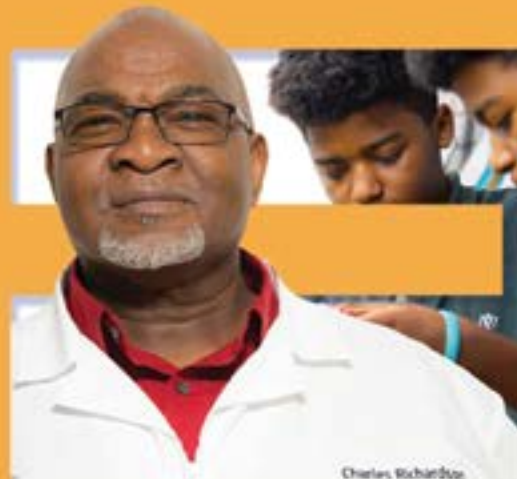


HANDS-ON ENGAGEMENT EMPHASIZING

- Critical Thinking
- Creativity
- Collaboration
- Problem Solving
- Leadership
- Confidence Building
- Communication producing improvement and empowerment as participants take ownership of their learning from a biblical perspective



28 YEARS OF EXPERIENCE
in Career and Technical Education,
STEM, and Engineering Pathways



Charles Richardson



CLIENTS & VENUES

- Vacation Bible School
- Charter Schools
- Public Schools
- Private Schools
- Home Schools
- Summer Enrichment
- After School Enrichment
- Professional Development
- NGO's
- Nonprofit Organizations
- Boys / Girls Clubs
- Boy / Girl Scouts
- Birthday Parties
- Community Events
- Corporate Functions
- Festivals
- Fund Raisers
- Private Parties
- Reunions
- Celebrations
- Small Groups
- Church Functions



SUGGESTED THEMES

- Sound
- Family
- Engineering
- Sovereignty
- Zipline
- Submission
- Rockets
- Math
- Grace
- Paper
- Mercy
- Obedience
- Flight
- Salvation
- Technology
- Team Work
- Transportation
- Unity
- Victory
- Science
- Failure
- Structures
- Creation
- Pulleys
- Gears
- Temperatures
- Cardboard
- Gizmos / Gadgets
- Solar Sources
- Investigations
- Projectile Motion
- Design Process
- Beyblades
- Forgiveness
- Energy / Forces / Motion
- Solids / Liquids / Gases
- Roller Coaster Physics
- Freestyling





email - stemexcellence@currently.com
website - stemexcellence.net
web email - info@stemexcellence.net

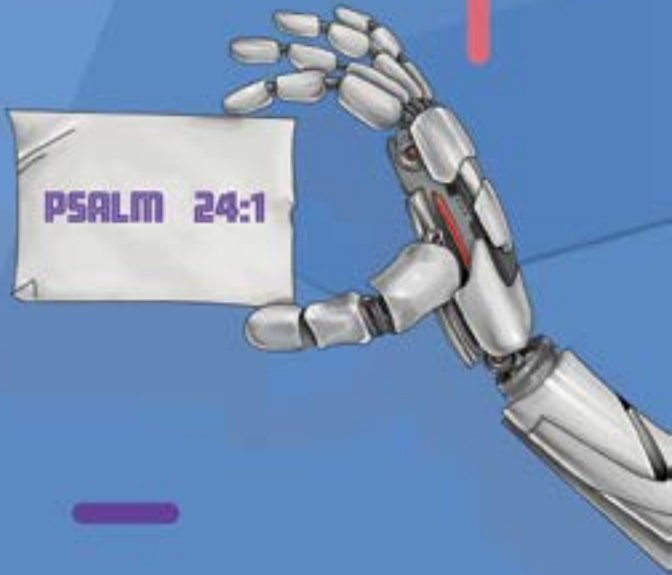


STEMEXCELLENCE

Charles Richardson - Facilitator

C 214-394-0799

“STEM RELEVANCE
FROM THE
DIVINE PERSPECTIVE”



PSALM 24:1

The earth is the Lord's
and all it contains,
The world and those
who dwell in it.

PSALM 24:1

